
PROSPECTUS

2026/27

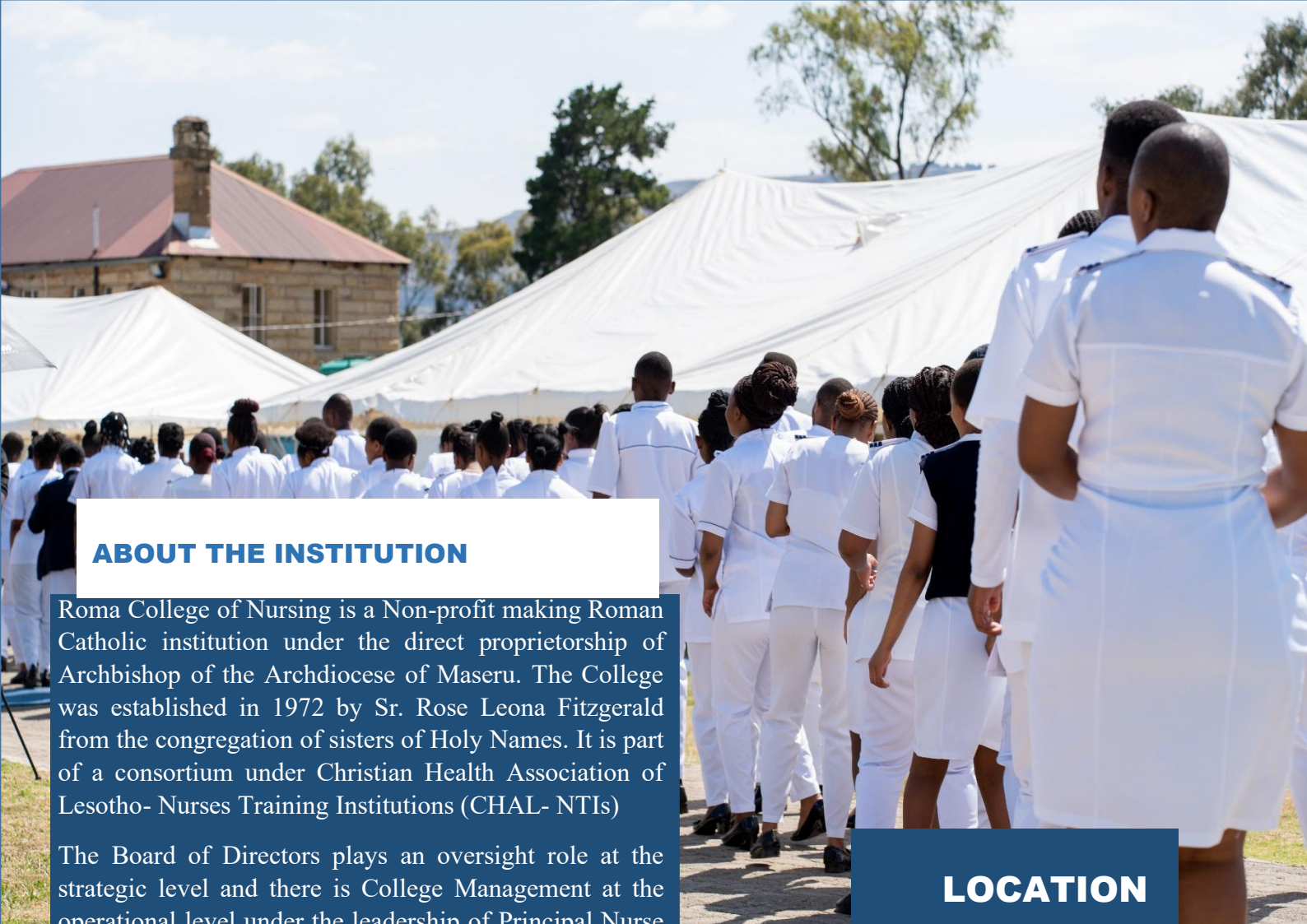


STRIVING FOR EXCELLENCE



Table of Contents

THE INSTITUTIONAL BACKGROUND	Error! Bookmark not defined.
LOCATION	2
VALUE STATEMENT	3
VISION STATEMENT	3
PHILOSOPHY	Error! Bookmark not defined.
MISSION STATEMENT	3
ABOUT ROMA COLLEGE OF NURSING	3
WORD OF ENCOURAGEMENT BY THE PRINCIPAL NURSE EDUCATOR	4
APPLYING TO RCN	5
PROGRAMS OFFERED AT ROMA COLLEGE OF NURSING ... Error! Bookmark not defined.	
The entry requirements	6
DIPLOMA IN NURSING - MODULES	7
DIPLOMA IN MIDWIFERY- MODULE	8
STUDENT HOUSING	9
STUDENT SUPPORT	9
HEALTH SERVICES	10
SIMULATION LABORATORY	11
LIBRARY SERVICES	12
CATERING SERVICES	13
STUDENTS LIFE AT RCN	14
STUDENT REPRESENTATIVE COMMITTEE	14
STUDENTS' REPRESENTATIVE COUNCIL STRUCTURE	15
SECURITY	16
TUTION FEES	17
FUNDING STUDIES	17



ABOUT THE INSTITUTION

Roma College of Nursing is a Non-profit making Roman Catholic institution under the direct proprietorship of Archbishop of the Archdiocese of Maseru. The College was established in 1972 by Sr. Rose Leona Fitzgerald from the congregation of sisters of Holy Names. It is part of a consortium under Christian Health Association of Lesotho- Nurses Training Institutions (CHAL- NTIs)

The Board of Directors plays an oversight role at the strategic level and there is College Management at the operational level under the leadership of Principal Nurse Educator, who works collaboratively with the Heads of Departments including the Student Representative Council (SRC).

As the nurses training institution Roma CON has its primary clinical site at St. Joseph's Hospital. Its mandate being to provide nursing and midwifery graduates to respond to Manpower needs within the health care system.

The College is affiliated with National University of Lesotho and offers two full time programs: a three-year diploma in Nursing and a two year diploma in Midwifery, for which the college has been fully accredited by the Council on Higher Education (CHE) and Lesotho Nursing Council. It is open to admit all qualifying candidates regardless of gender, religion and social status.

LOCATION

The College is located at Ha Mafefoane Roma Valley, approximately 35 Kilometres from Maseru, the capital of Lesotho. It is under Maama Constituency and Manonyane Council. The Chief of Ha-Mafefoane is responsible for chieftaincy matters where Roma CON community can require assistance

The College is surrounded by various educational facilities which include the National University of Lesotho, primary and high schools, seminaries, and religious novitiates within the Roma Valley.

Due to the foothill location of Roma College of Nursing, the winters are extremely cold.

ABOUT ROMA COLLEGE OF NURSING

VISION STATEMENT

- ❖ We aspire to be a globally recognized health training institution

MISSION STATEMENT

- ❖ To provide evidence-based education and training that prepares competent healthcare professionals to respond to current and emerging healthcare needs.

VALUE STATEMENT

.Professionalism

.Transparency

.Christianity

.Accountability

.Integrity

.Excellance

MOTTO

‘Where passion meets purpose in the field of Nursing’

WORD OF ENCOURAGEMENT BY THE RECTOR

Welcome for having an interest in knowing about Roma College of Nursing. It is a roman catholic nursing institution situated at the foothills in the Roma Valley and is surrounded by many schools ranging from primary schools, secondary and high schools as well as Major Seminary. In its periphery about 5 KM IS THE National University of Lesotho of which the College is an affiliate

The College was established in 1972 offering the Nursing Programme with as few as 15 students but later in 1979 Midwifery Programme was established. It has currently increased its student enrolment to 160 students in both nursing and midwifery Programme offered at Diploma Level

The institution is registered with Ministry of Education as the institution of higher education, it is also among the accredited institutions in Lesotho. Roma college aims at offering programmes that indisputable and are relevant as well as being responsive to human resource needs of the country. The offered programmes are being evaluated and accredited by Council on Higher Education

The College also offers teaching and learning approaches that Mold graduate who is passionate about Nursing, mature, professional and has a moral fibre and good qualities of a respected citizen whose principles are based on strong foundations. Students are offered guidance and support once admitted in order to assist them to study at their maximum potential

Considering studying at Roma College of Nursing is therefore a very good move as graduate from this college are undoubtedly employable unless one has other preferences. Good luck in you gesture to know more about us. You contact us in the given address and phone numbers

Sincerely,



Mabataung Litsebe-Tsuhlane

College Rector

Roma College of Nursing

APPLYING TO Roma CON

Application period is open from January to March. The application forms can be accessed Online on the college website, www.rcn.org.ls, or collected from the College Secretary's Office during the week from 9:00 am to 3:00pm.

Completed application forms must be returned to the College Secretary's Office. Each application form contains a reference number for the applicant, and that number is significant since it is how the college will identify the applicant and makes it easier for the office to track down the application.

Following the application process, the selection team will finalize the process, which will ultimately result in notifying accepted candidates and publication of the admissions list.



The entry requirements

1. NURSING PROGRAMME

COSC, LGSE/GCSE LEVEL:

- D or better in English Language
- D or better in Mathematics
- C or better Credit in Biology
- C or better in Physics/ Chemistry (Physical Science)
- C or better in Sesotho or Native Language for International Candidates
- C or better in ICT, Food and Nutrition, English Literature or History

NURSING ASSISTANCE:

- Pass with Distinction
- Pass with Merit, credit or a Pass plus two year working experience
- Valid license to practice.

2. MIDWIFERY PROGRAMME

- Diploma in Nursing
- Registration with Lesotho Nursing Council (LNC)
- Valid license to practice from LNC/ should sit for the first licensure examination
- Lesotho Nurses Association (LNA) registration

DIPLOMA IN NURSING - MODULES

1 st SEMESTER		2 nd SEMESTER		
LEVEL 1	Name of Module	Module code	Name of Module	Module code
	Nursing-Community Assessment	NUR 110	Basic Nursing(Family assessment +Skin)	NUR 1212
	Microbiology and Parasitology	MAP 114	Anatomy and Physiology	ANP 124
	Ethics	ETH 114	Psychology	PYS 124
	Sociology	SOC 114	Practicum	NUR 1212

Name of Module	Module code	Name of Module	Module code
Nursing-Primary Health Care	PHC 2112	Nursing-Primary Health Care	PHC 2212
Pharmacology	PHM 214	Anatomy and Physiology	ANP 226
Anatomy and Physiology	ANP 216	Pharmacology	PHM 224
		Mental Health Nursing	MHT 224
Practicum	PHC 2112	Practicum	PHC 2212

LEVEL 3

Name of Module	Module code	Name of Module	Module code
Nursing	NUR 3113	Nursing	NUR 3213
		Management	MGT 326
Practicum	NUR 3113	Practicum	NUR 3213

DIPLOMA IN MIDWIFERY- MODULE



Name of Module	Module Code	Name of Module	Module Code
Antenatal Care	MID 117	Post Natal Care	MID 126
Labour and Childbirth	MID 119	Neonatal Care	MID 127
Research Project	RES 107	Research Project	RES 107
Practicum (labour and Child Birth, Antenatal Care)	MID 119 and MID 117	Practicum(Post Natal Care and Neonatal Care)	MID 126 and MID 127

Student Assessment

Student assessment is conducted on both a formative and summative basis each semester. Assessment covers both theoretical and practical components of the relevant modules. Assessment methods include written tests and examinations, Objective Structured Clinical Examinations (OSCEs), Objective Structured Long Examination Records (OSLER), Direct Observation of Procedural Skills (DOPLER), and case presentations.



STUDENT ACCOMODATION

A limited number of student accommodation spaces are provided by the College on a first-come, first-served basis. During the application process, students are required to indicate whether they wish to reside on campus.

STUDENT SUPPORT

To guarantee that learners make adequate progress towards fulfilling the course learning outcomes, students are supported in a variety of ways while they pursue their education. Academic, medical, and social support are just a few examples of the services that fall under the category of support services.

HEALTH SERVICES

Wellness Center

The College has Wellness Centre on campus to ensure students' well-being, which it views as its top priority. The Wellness Centre offers the following services: - SRH services, which include:

- Screening for cervical cancer
- HIV testing and counselling
- STI screening and treatment.
- TB screening and treatment referral
- Connecting individuals who test negative with relevant preventive measures
- Psychosocial support, which includes ART adherence.

An experienced, licensed professional Nurse all offer each these services.

SIMULATION LABORATORY

In order to gain more experience, students are placed in various clinics and hospitals as part of Nursing Program and the Midwifery Program.

The clinical practice skills are practiced in this simulation laboratory following lectures in the classroom, with clinical supervisors demonstrating all procedures.

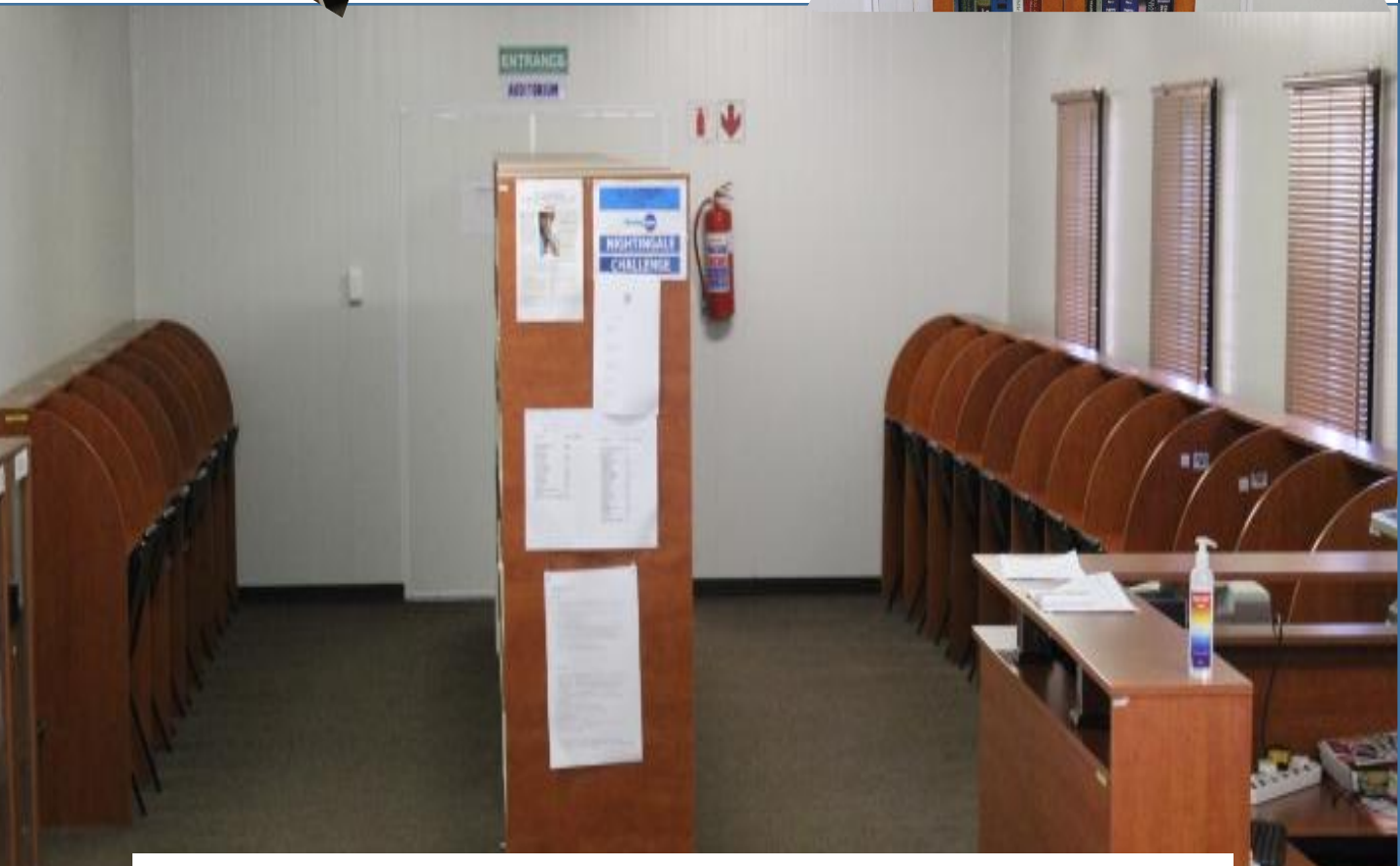


*Clinical skills
laboratory*

CLINICAL PLACEMET SITES

- Nazareth Health Center
- Thaba-Bosiu Health Center
- Queen Mamohato Memorial Hospital
- Mabote Filter Clinic
- Mohlomi Psychiatric Hospital
- Motebang Hospital
- St Joseph's Hospital
- Mohale's Hoek Hospital
- Qoaling Filter Clinic
- Loretto Health Centre
- Domiciliary Health Centre
- Likotsi Filter Clinic
- Tlali Health Center
- LDF Clinic

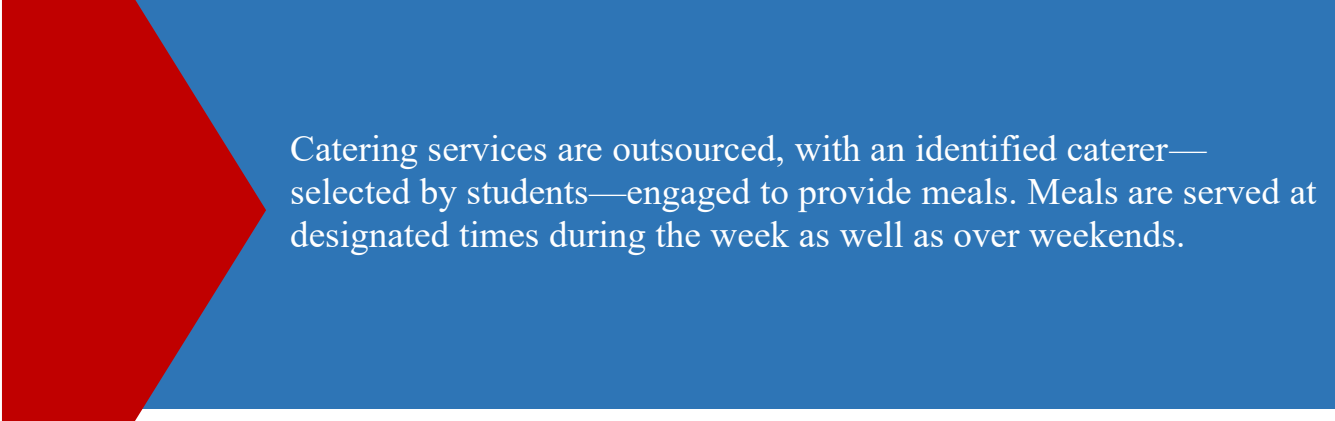
LIBRARY SERVICES



With regard to teaching and learning materials, the library provide students with electronic resources from multiple sources as well as hard copy books. Services at the library are offered every day of the week.

Roma College of Nursing Library is a member of the Lesotho Library Consortium and the Lesotho Library Association

CATERING SERVICES



Catering services are outsourced, with an identified caterer—selected by students—engaged to provide meals. Meals are served at designated times during the week as well as over weekends.

STUDENTS' LIFE AT RCN



- Inter Nursing College games
- Netball
- Volleyball
- Soccer
- Table tennis
- Lady Soccer

STUDENTS SOCIETIES/ ASSOCIATIONS

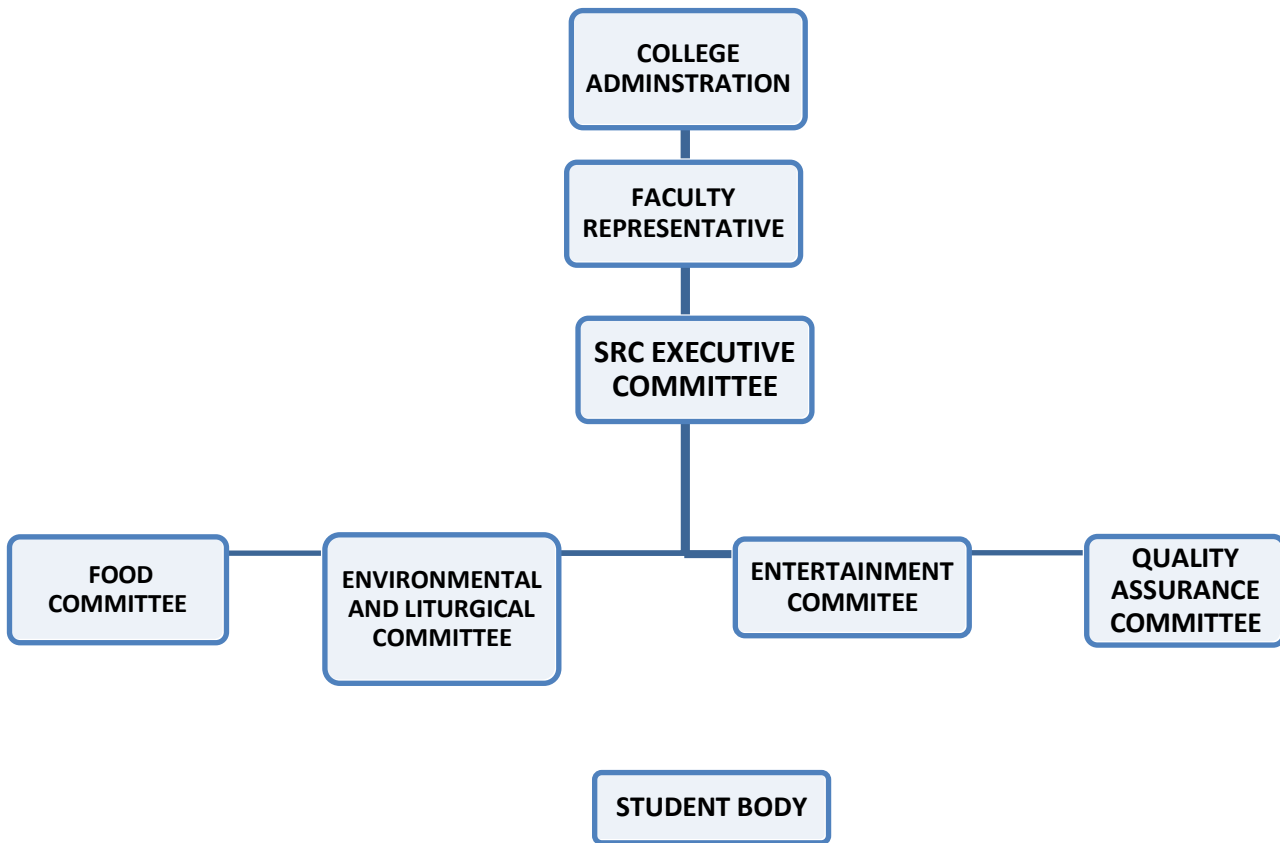
- Lesotho Nurses Association Student Chapter (SCLNA)
- Lesotho Union of Catholic Youth (LUCY)
- College choir
- Scripture Union



STUDENT REPRESENTATIVE COMMITTEE

There is an established Student Representative Committee (SRC) that oversees the issues affecting the Student Body and that liaise with other established structures within the College to ensure a smooth communication of students concerns and contributions.

STUDENTS' REPRESENTATIVE COUNCIL STRUCTURE



SECURITY

Security guards on duty at the College are responsible for safeguarding both persons and property. Accordingly, all staff members and students are required to comply with established security protocols designed to protect the College's assets and the safety of its community.

Students bear responsibility for the safety and security of their personal belongings, including motor vehicles and other valuables. All reports concerning student-owned vehicles parked on campus must be lodged with the Security Office. The College Management shall not be held liable for loss or damage to personal property arising from unforeseen events such as power outages, burst pipes, or other related incidents.

Any damage to, or observed risk to, College property must be reported promptly to the Housemother and/or other designated College authorities. This reporting obligation also applies when students are assigned to locations outside the College premises, including clinical training facilities.

Acts of vandalism, rioting, or any form of property damage are strictly prohibited. Any disputes or concerns must be addressed calmly and resolved through the appropriate institutional structures.

TUITION FEES

ITEM	FIRST YEAR	SECOND YEAR	THIRD YEAR	MIDWIFERY
1. TUITION	8,715.57	8,715.57	8,715.57	8,715.57
2. BOARDING & LODGING	5,225.00	5,225.00	5,225.00	5,225.00
3. CATERING	13,400.00	13,400.00	13,400.00	13,400.00
4. BOOKS	6,603.15	6,603.15	6,603.15	6,603.15
5. EXAMINATION FEE	1,266.90	1,783.40	1,969.80	1,969.80
6. PROJECT- GENERAL NURSING & MIDWIFERY	525.00			1,108.00
7. IT INTRODUCTION	1,455.30	290.00	290.00	290.00
SUBTOTAL	37,191.92	34,175.07	32,782.88	33,313.88
REGISTRATION FEE	4,325.00	3,920.00	2,575.00	2,920.00

FUNDING STUDIES

Since 1999, NMDS has financed far more than 90% of the students. Many students have benefited greatly from this, as the majority are unable to pay the necessary fees. Few students actually pay for their education. The support from NMDS is limited to inhabitants of Lesotho.

STRIVING FOR EXCELLENCE



IMPORTANT DATES

- ❖ Retreat for staff and students
- ❖ Pinning ceremony
- ❖ Graduation ceremony
- ❖ Holidays

CONTACT INFORMATION

The Rector
Roma College of Nursing
P.O. Box 26
Roma 180

Tel: +266 28340486
+266 59400444

E-mail: info@rcn.org.ls

Website: www.rcn.org.ls

Facebook Page: [Roma College of Nursing](#)

